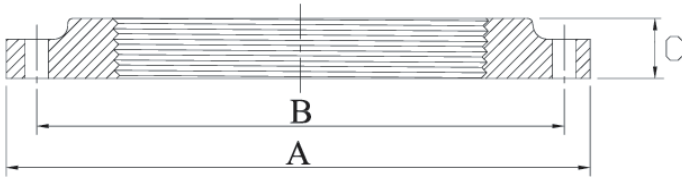


Stainless Steel 316 BSP Drilled Flange Table E

PRODUCT DATASHEET



Features

- Designed to be bolted to an existing flange or wall mounted to connect a Male BSP threaded fitting or pipe
- Suitable for hot & cold non-potable water, oil and gas and is commonly used in the food processing and chemical service industries

Specifications

- Max Working Pressure: 1400 kPa (14 BAR)
- Max Working Temperature: 180°C
- Thread: Female BSP to ISO 228-1

Dimensions (mm)

Size	A	B	C	Bolt Size	Hole Diameter	No. of Holes
15mm (1/2")	95.3	66.7	15.8	M12	14	4
20mm (3/4")	101.6	73	17.4	M12	14	4
25mm (1")	114.3	82.6	18.2	M12	14	4
32mm (1 1/4")	120.7	87.3	19.0	M12	14	4
40mm (1 1/2")	133.3	98.4	21.4	M12	14	4
50mm (2")	152.4	114.3	22.2	M16	18	4
65mm (2 1/2")	165.1	127	26.2	M16	18	4
80mm (3")	184.1	146	27	M16	18	4
100mm (4")	215.9	177.8	32.7	M16	18	8
150mm (6")	279.0	235.0	40.0	M19	22	8

Materials

#	Part	Material
1	Body	316 Stainless Steel

Warranty

24 months

For Further Information

📧 info@valvewarehouseaustralia.com.au

☎ 03 9421 0042

Valve Warehouse ABN 33 632 515 149