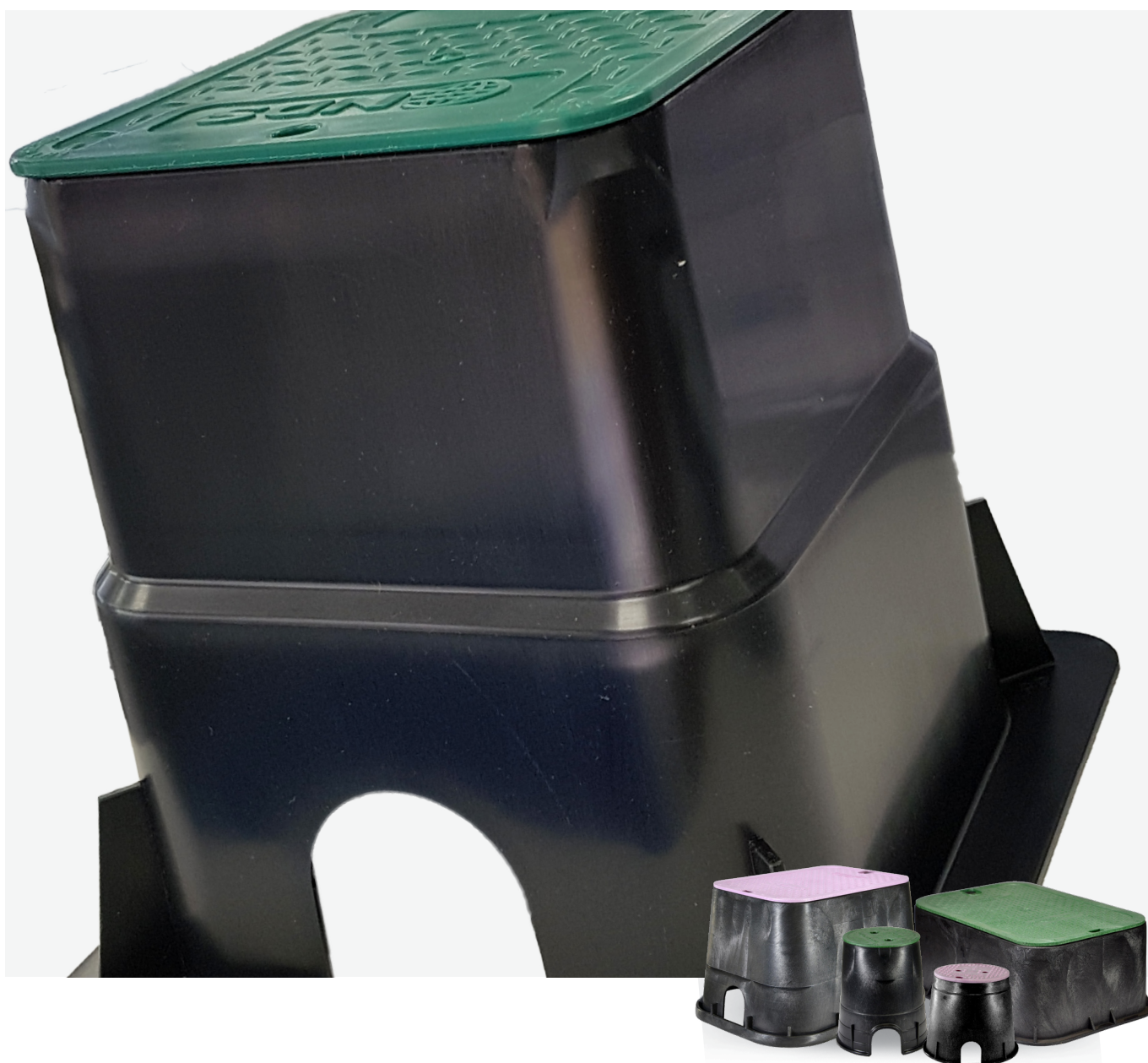


Customer Value through Innovation



# Valve Boxes

Black/Green, Green/Green & Black/Purple

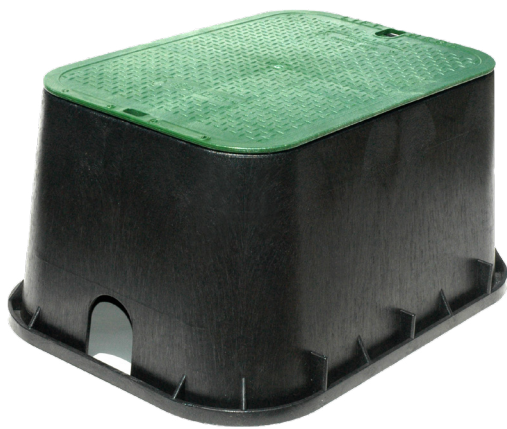


## Valve Boxes

NDS Valve Boxes will stand up to the most demanding outdoor conditions while offering years of consistent service. Available in a range of colours and sizes to fit various applications:

- Black / Green - Residential
- Green / Green - Commercial
- Black / Purple - Recycled / Reclaimed

All boxes and lids contain UV inhibitors to prevent discolouration and for sustained durability and performance in direct sunlight. They have corrugated sidewalls to provide greater strength and stability and the reinforced covers are able to withstand heavier loads. The overlapping covers also prevent dirt and grass from settling between the body and cover.



### UV Stabilised

- Will continue to perform, even in harsh sunlight conditions.

### Innovative Design

- Overlapping covers for a superior seal.

### Reinforced

- Reinforced covers are able to withstand heavier loads.

### Large Range

- There is a box and colour to suit various applications.

## Applications

- Watering.
- Irrigation.
- Plumbing.

## Installation

- Suitable for above or below ground installation.

Parts & Materials	
Body / Lid	Injection-moulded from 90% recycled polyolefin structural foam
Bolt	Stainless Steel
Nut	Brass
*150mm Square Box	Polypropylene

## Lid Colour Variations

Green	Purple	Sand	Black
<ul style="list-style-type: none"> <li>• ICV</li> <li>• Sewer</li> </ul>	<ul style="list-style-type: none"> <li>• Reclaimed</li> </ul>	<ul style="list-style-type: none"> <li>• ICV</li> </ul>	<ul style="list-style-type: none"> <li>• Water</li> <li>• CATV</li> <li>• Telephone</li> </ul>

## Range

Black / Green



### NDS 150mm Square

PART NUMBER	ITEM NUMBER	PRODUCT SIZE	BOX / COVER COLOUR
150BC	08376101030	150MM SQUARE	BLACK / GREEN



### NDS Standard Series 6" Round

PART NUMBER	ITEM NUMBER	PRODUCT SIZE	BOX / COVER COLOUR
107BCH	08376101024	6" ROUND X 8.5"	BLACK / GREEN



### NDS Standard Series 10" Round

PART NUMBER	ITEM NUMBER	PRODUCT SIZE	BOX / COVER COLOUR
111BC	08376101066	10" ROUND X 10.5"	BLACK / GREEN



### NDS Standard Series 14" x 19" Rectangular

PART NUMBER	ITEM NUMBER	PRODUCT SIZE	BOX / COVER COLOUR
113BC	08376101108	14" X 19" X 12"	BLACK / GREEN
115TBC	08376101130	14" X 19" X 6"	BLACK / GREEN



### NDS Standard Series 13" x 20" Jumbo Rectangular

PART NUMBER	ITEM NUMBER	PRODUCT SIZE	BOX / COVER COLOUR
117BC	08376101164	13" X 20" X 12"	BLACK / GREEN
119TBC	08376101176	13" X 20" X 6"	BLACK / GREEN



### NDS Standard Series 13" x 24" Rectangular

PART NUMBER	ITEM NUMBER	PRODUCT SIZE	BOX / COVER COLOUR
121BCB	08376101198	13" X 24" X 12"	BLACK / GREEN



### NDS Standard Series 17" x 30" Rectangular

PART NUMBER	ITEM NUMBER	PRODUCT SIZE	BOX / COVER COLOUR
124BCB	08376101214	17" X 30" X 15"	BLACK / GREEN

Green / Green



**NDS Standard Series 10" Round**

PART NUMBER	ITEM NUMBER	PRODUCT SIZE	BOX / COVER COLOUR
112BC	08376101067	10" ROUND X 10.5"	GREEN / GREEN
112BCBS	08376101068	10" ROUND X 10.5" - "SEWER"	GREEN / GREEN
112BCBSW	08376101070	10" ROUND X 10.5" - "STORMWATER"	GREEN / GREEN



**NDS Standard Series 14" x 19" Rectangular**

PART NUMBER	ITEM NUMBER	PRODUCT SIZE	BOX / COVER COLOUR
114BC	08376101109	14" X 19" X 12"	GREEN / GREEN
116TBC	08376101131	14" X 19" X 6"	GREEN / GREEN



**NDS Standard Series 13" x 20" Jumbo Rectangular**

PART NUMBER	ITEM NUMBER	PRODUCT SIZE	BOX / COVER COLOUR
118BC	08376101165	13" X 20" X 12"	GREEN / GREEN



**NDS Standard Series 17" x 30" Rectangular**

PART NUMBER	ITEM NUMBER	PRODUCT SIZE	BOX / COVER COLOUR
125BCB	08376101215	17" X 30" X 15"	GREEN / GREEN

Black / Purple



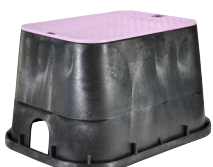
**NDS Standard Series 6" Round**

PART NUMBER	ITEM NUMBER	PRODUCT SIZE	BOX / COVER COLOUR
107BCR	08376101036	6" ROUND X 8.5"	BLACK / PURPLE



**NDS Standard Series 10" Round**

PART NUMBER	ITEM NUMBER	PRODUCT SIZE	BOX / COVER COLOUR
111BCR	08376101074	10" ROUND X 10.5"	BLACK / PURPLE



**NDS Standard Series 14" x 19" Rectangular**

PART NUMBER	ITEM NUMBER	PRODUCT SIZE	BOX / COVER COLOUR
113BCR	08376101110	14" X 19" X 12"	BLACK / PURPLE

## Spare Parts

### Overlapping Covers



PART NUMBER	ITEM NUMBER	SUITABLE FOR	COVER COLOUR
150C	08376101032	150MM SQUARE	GREEN



107C	08376101002	6" ROUND	GREEN
111C	08376101006	10" ROUND	GREEN



113C	08376101010	14" X 19" RECTANGULAR	GREEN
117C	08376101014	13" X 20" RECTANGULAR	GREEN
222C	08376101016	13" X 24" RECTANGULAR	GREEN
223C	08376101020	17" X 30" RECTANGULAR	GREEN



107CR	08376101004	6" ROUND	PURPLE
111CR	08376101008	10" ROUND	PURPLE



113CR	08376101012	14" X 19" RECTANGULAR	PURPLE
121CR	08376101018	13" X 24" RECTANGULAR	PURPLE
223CR	08376101022	17" X 30" RECTANGULAR	PURPLE

## Related Products



Norma Rural Compression Fittings



Guyco Threaded Fittings



Norma Metric Compression Fittings



PVC Ball Valves



Brass Ball Valves



Guyco Ball Valves



Customer Value through Innovation



### **NORMA Pacific Australia**

74 Bazalgette Crescent  
Dandenong South VIC 3175

Tel: 1300 252 677  
Fax: 03 9761 4030

[www.normagroup.com.au](http://www.normagroup.com.au)  
[sales.au@normagroup.com.au](mailto:sales.au@normagroup.com.au)